



THE RIGBY FOUNDATION

ANNUAL REVIEW 2024-25

CONTENTS

CHAIRMAN’S FOREWORD.....	3
ABOUT THE RIGBY FOUNDATION	4
EMPOWERING THE FUTURE OF THE WEST MIDLANDS	5
A NEW DEAL FOR YOUNG PEOPLE IN THE WEST MIDLANDS	6
INSPIRING FUTURES CHARITY PARTNERS	8
INSPIRING FUTURES EDUCATION PARTNERS.....	9
STRATEGIC PARTNERS	12
OTHER PARTNERS	13
SMALL GRANTS.....	13
THE RIGBY FOUNDATION TRUSTEES.....	14
THE RIGBY FOUNDATION STAFF	16
FINANCIAL OVERVIEW	17
LOOKING AHEAD	18



“From day one, we set out to value our people, innovate for our customers, and give back to the communities we work in. As we celebrate this landmark year, those principles remain at the heart of everything we do.

“We are 100% family owned, and we are steadfastly committed to looking after our people and realising the potential of the communities they live and work in.”

Sir Peter Rigby
Founder and Trustee

CHAIRMAN'S FOREWORD

As I reflect on this formative year for The Rigby Foundation's new strategy, our early achievements and those of our partners fill me with pride. Our place-based giving approach, working in partnership with expert charities and local and combined authorities, has enabled us to amplify our impact by unlocking local and central funding to ensure we create meaningful, lasting impact for young people in need across the West Midlands.

To develop The Rigby Foundation's new strategy, we have embraced the mindset of a start-up business - agile, purposeful but also deeply committed to understanding the needs of our community. Through an extensive consultation process, we interviewed over thirty charities and selected exceptional partners who share our vision for transformative change. Our first charity partnership, launched in summer 2024, was with Generation UK, which facilitates much needed skills bootcamps for unemployed people supporting them

into meaningful work. Our funding commitment of £600k over three years will help train at least 400 young people in the West Midlands, giving them a potentially life-changing opportunity.

The launch of our flagship education initiative, Inspiring Futures, was another significant milestone. Eighteen schools applied for our grants of £100,000 per year for three years that commence in September 2025 and we were able to offer support to ten outstanding institutions. These partnerships represent more than financial investment; they embody our commitment to nurturing the next generation and strengthening the educational foundation of our home region.

I am especially pleased with the close partnership we have established with the West Midlands Combined Authority. What began as a working relationship has evolved into a genuine partnership built on mutual

respect and shared goals to improve outcomes for our young people. Similarly, our relationship with Birmingham City Council continues to strengthen, creating a robust foundation for coordinated regional development that will improve the lives of the next generation.

As we approach the end of this significant year, our first with full resource deployment, I am confident that the operational maturity we have achieved will aid our efforts to deliver our ambitious transformational change programme. I extend my heartfelt gratitude to our Executive Director, Sonia Chhatwal, and her dedicated team, whose hard work has made our significant progress possible.

In our capacity as the most significant philanthropic family in the West Midlands I hope we can inspire policy makers and other philanthropists across the country to consider a place-based approach to achieve lasting transformational change.



The future holds tremendous promise for our local young people and together with our partners and stakeholders, The Rigby Foundation will endeavour to ensure they have the chance to thrive in a stronger more prosperous West Midlands.

Steve Rigby, Chairman

EXECUTIVE DIRECTOR'S FOREWORD

This has been a very busy and exciting year for The Rigby Foundation. Since my appointment in Autumn 2023, the Trustees and I have worked closely together to agree a clear plan. The Rigby family's strong connections to the West Midlands made becoming a place-based funder with donations focussed on this region a clear starting point. Individual meetings with each of the Trustees explored the many challenges and opportunities facing local communities, and they commissioned renowned think tank the Centre for Social Justice (CSJ) to ensure an evidence-based approach to future funding.

The feedback CSJ received from local young people, education leaders, employers and community groups was hard hitting:

- only around 4% of students eligible for free school meals in the region progress to the most competitive universities, compared with nearly 12% of their wealthier peers

- almost 1 in 5 young people are out of work – much higher than the national average
- the youth of Birmingham highlighted work experience as the single biggest action that could make a difference to employment prospects.

The CSJ Research, encapsulated in their report *A New Deal for Young People in the West Midlands*, led the Trustees to confirm that the Foundation's Vision is to ensure that **'Young people from less advantaged backgrounds succeed academically and secure meaningful employment'**, with support focussed on young people aged 11 years to 25 years, and to fund projects that:

- Accelerate academic progress
- Build essential skills
- Guide post-school decisions
- Boost employability opportunities
- Enhance wellbeing

We then carefully selected charities that are highly experienced in delivering programmes that achieve these objectives.

Establishing the Foundation's 'Inspiring Futures' programme was another highlight for 2024. Our visits to each of our education partners confirmed that despite experiencing multiple and complex challenges, the young people who will be involved in Inspiring Futures, are bright, ambitious, and engaging, and have the potential to become happy, healthy, successful adults, provided they are able to access the same opportunities as their more advantaged peers. Our hope is that at least 1,000 students per year will benefit from involvement in Inspiring Futures programmes.

We are also delighted that our education and charity partners have agreed to meet regularly to share learning and best practice, which we know will further enhance pupil outcomes. Inspiring Futures will be independently evaluated by the National Foundation for Education Research, and we look forward to providing an update on the programme's first year in our next Annual Review.



The Foundation Team has now grown to include Jemima Waltho, Partnerships Manager, and Sue Benson, Administrator, and together with the Trustees we look forward to ensuring that everyone involved in Foundation funded programmes has access to the support they need to thrive.



Sonia Chhatwal, Executive Director

ABOUT THE RIGBY FOUNDATION

The Rigby family have been supporting communities in the West Midlands and beyond for over 30 years. Sir Peter Rigby and his wife Patricia set up their family Foundation in 1992, later joined as Trustees by their two sons James and Steve. Previously supported projects include the City of Birmingham Symphony Orchestra, Warwickshire's Shakespeare Hospice, the Commonwealth Games legacy charity, The Prince's Trust and Birmingham Children's Hospital Charity.

To coincide with the 50th anniversary of Rigby Group plc in 2025, the Trustees decided to refocus The Rigby Foundation to become a place-based charity, specifically supporting young people from the West Midlands. Funding is now committed to programmes that enable young people aged 11 years to 25 years, particularly those from less advantaged backgrounds, to access the best education possible and to have the chance of securing meaningful and sustainable employment.

The Foundation was also reconstituted as a CIO in 2024 and is funded by donations from

the Rigby Group plc. The Board is Chaired by Steve Rigby and Sir Peter, Patricia and James Rigby remain as Trustees.

To facilitate this new approach to funding, the Trustees appointed the Foundation's first member of staff, Executive Director Sonia Chhatwal, in September 2023. Sonia was joined by Partnerships Manager Jemima Waltho and Administrator Sue Benson in January 2025.

The Trustees and Foundation Team work together with carefully selected charity partners whose aims align with our priorities. Our partners help young people improve their Maths and English, access mental health support, build employability skills and secure good quality work experience as well as meaningful opportunities to learn about the workplace. We also facilitate opportunities for Rigby Group employees to share their skills and experience with local young people through mentoring and careers workshops. All of our partners receive at least three years' funding to allow time to achieve and embed lasting change.

OUR VISION:

Young people from less advantaged backgrounds succeed academically and secure meaningful employment.



"We believe passionately that the opportunities open to young people should not be limited by where they live or by their family background."

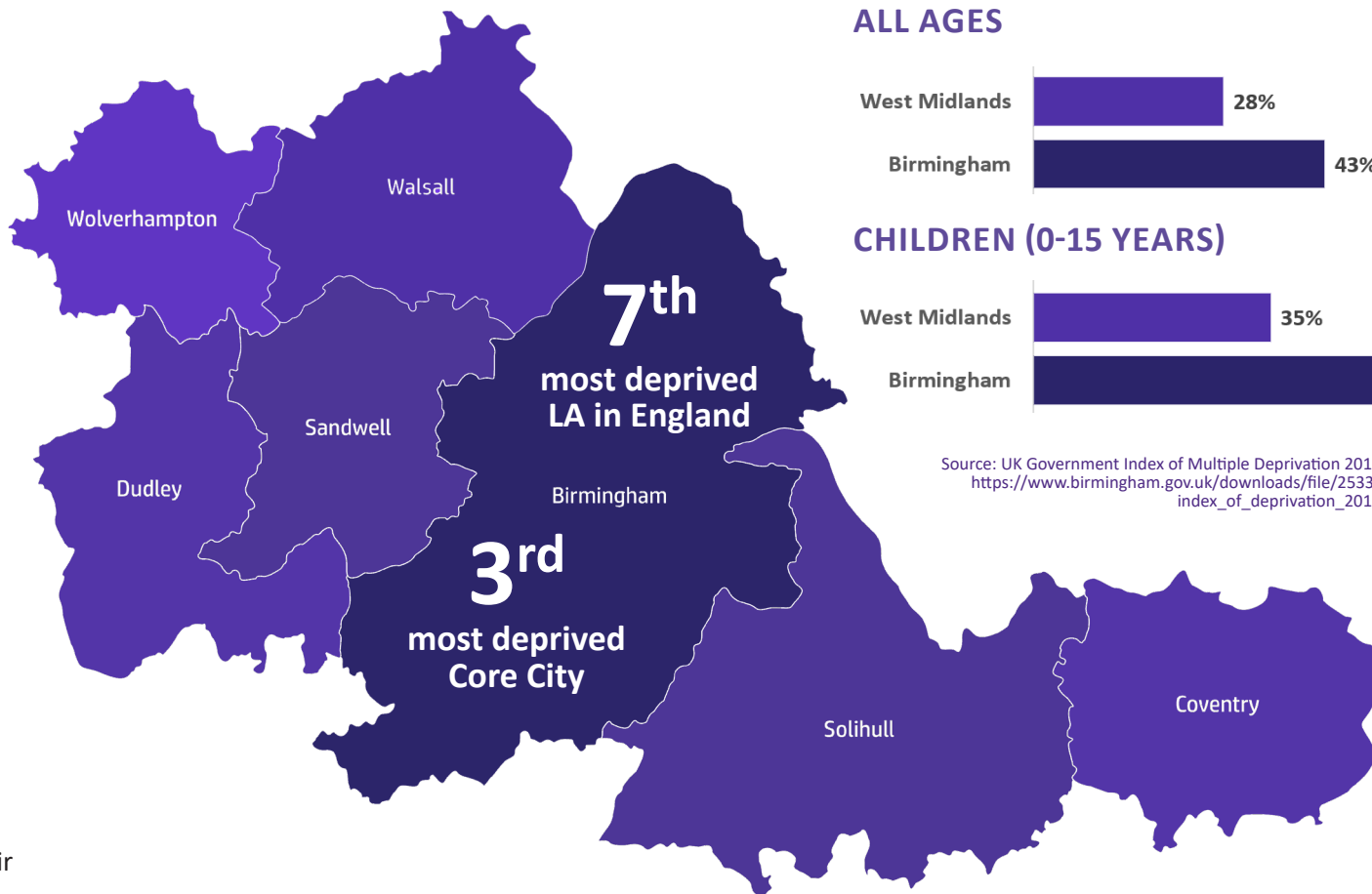
Sonia Chhatwal, Executive Director

EMPOWERING THE FUTURE OF THE WEST MIDLANDS

The Rigby family have strong ties to the West Midlands both as a place where they have lived and worked, and as a region where Rigby Group plc companies have a significant presence.

The West Midlands also faces many challenges. Birmingham in particular has been ranked as the 7th most deprived local authority in England in the Government's Indices of Deprivation since 2015 and more than 60% of the city's population live in neighbourhoods considered to be amongst the top 30% most deprived nationally.

For these reasons the Trustees have chosen to make the West Midlands the Foundation's priority, with a particular focus on central and south Birmingham. The Trustees see a unique opportunity to help propel the region forward, equipping young people with the skills and opportunities they need to reach their full potential.



POPULATION LIVING IN THE TOP 10% MOST DEPRIVED AREAS IN ENGLAND

ALL AGES



CHILDREN (0-15 YEARS)



Source: UK Government Index of Multiple Deprivation 2019
https://www.birmingham.gov.uk/downloads/file/2533/index_of_deprivation_2019

A NEW DEAL FOR YOUNG PEOPLE IN THE WEST MIDLANDS

The Rigby Foundation believes in an evidence-based approach to funding to ensure that our programmes achieve the greatest impact. So the first step in developing our new strategy was to commission leading think tank the Centre for Social Justice to carry out research into the challenges facing children and young people in the West Midlands.

The researchers spoke to charities, school leaders and employers who told of young people lacking aspiration and social and communication skills, of stagnant social mobility, and of families impacted by intergenerational worklessness.

The final report, *A New Deal for Young People in the West Midlands*, published in June 2024, outlined key recommendations for Government, Local Authorities, schools and colleges, employers and philanthropists to improve outcomes for local young people. These included ensuring that young people have access to quality work experience and extracurricular activities, encouraging employers to upskill and employ less advantaged young people and ensuring that secondary school students are aware of opportunities for apprenticeships.

“Ambition in our young must be matched with an environment that allows them to prosper locally in well paid roles, so it is clear that there is a great need in the West Midlands for a new approach to helping the next generation to thrive, and the Rigby Family want to be a part of the solution.”

Steve Rigby, Chairman of the Rigby Foundation



- In July 2021 **almost 1 in 5** young people in Birmingham were **out of work**, much higher than the national average
- Children and young people in the West Midlands are **second to least likely nationally** to attend clubs for **hobbies, arts and music** and the **least likely** to have had opportunities for **work experience**
- **Only 4%** of young people from the least advantaged backgrounds in the region **progress to the best universities** compared with 12% nationally

inspiring futures

Building on the findings of the CSJ research, The Rigby Foundation's Trustees are committed to funding programmes which help the region's young people to succeed in education and to have the chance of securing meaningful employment. In January 2025 we launched our ground-breaking social mobility project Inspiring Futures, focussed on 11- to 25-year-olds from less advantaged backgrounds. The programme pairs schools and colleges from across Birmingham with leading charities who will provide support with activities such as:

- **Attainment** in English and Maths
- **Essential Skills** including leadership, problem solving, debating, project management
- **Post school destinations** including further education, higher education and apprenticeships
- **Employability skills** to ensure that young people are prepared for the world of work
- **Wellbeing** with a particular focus on mental health

Working alongside the West Midlands Combined Authority and Birmingham City Council, The Rigby Foundation will provide funding of £1 million per year for three years.

10 EDUCATION PARTNERS

9 CHARITY PARTNERS

£100K

PER EDUCATION PARTNER PER YEAR

£3M

TOTAL FUNDING COMMITMENT

1,000

STUDENTS PER YEAR SUPPORTED



"We know life chances will improve as a direct result of your investment in our work. We are excited for the first tutoring to start in Autumn 2025 and can't wait to see the local volunteer tutors use their skills to help the next generation."

ACTION TUTORING



"We are incredibly proud to partner with you creating supportive environments in schools and communities, helping young people succeed in school and opening pathways to better futures."



INSPIRING FUTURES CHARITY PARTNERS



Provides impactful Maths and English in-school tutoring programmes that work to close the academic attainment gap between pupils from less advantaged backgrounds and their more affluent peers.



Builds long term partnerships with employers and schools by creating programmes that inspire, equip and empower young people, bridging the gap between education and the world of work.



Helps young people recognise and realise their potential and acquire the key skills which will enable them to achieve social mobility and prepare them for tertiary education and the modern workplace.



Empowers young people from less advantaged backgrounds to develop the essential skills and confidence proven to support their future education, work and wellbeing.



GET FURTHER

Supports students from less advantaged backgrounds to secure gateway English and Maths qualifications that unlock opportunities in education and work.



Provides local learning centre hubs that help to break cycles of disadvantage and open up new opportunities for young people.



Provides mental health support in schools through one-to-one and group counselling using tried and tested methods backed by research. In addition, they offer expert training and professional qualifications.



Builds the essential skills needed to succeed in life and in work, such as speaking, listening, teamwork and problem solving.



Provides a digital platform that identifies talented students in low opportunity areas and unlocks their potential all the way from school into top universities, apprenticeships, and careers.

INSPIRING FUTURES EDUCATION PARTNERS



**Ark Boulton
Academy**

"The carefully thought through collaboration with charitable partners will enable us to strengthen our provision for pupils in mental health, careers and key employability skills."



**Ark St Alban's
Academy**

"Your support will significantly enhance our ability to deliver meaningful programmes, expand access, and inspire lifelong learning among those we serve."



**CITY
ACADEMY**

"The generous investment in our school and our students will be powerful in changing the lives for many of our students, whether it be on academic progress, wellbeing or supporting future aspirations."



GRACE ACADEMY SOLIHULL

"The Inspiring Futures project will increase our students' ability to access mental health support, develop key skills that will directly impact their future employability and raise their aspirations."



**JEWELLERY
QUARTER
ACADEMY**

"This invaluable contribution ensures that our students will receive the encouragement, resources, and opportunities necessary to thrive both academically and personally."



**John Henry Newman
Catholic College**

"Your commitment to helping young people thrive has already made a real difference - opening up new opportunities for our students and giving our staff fresh inspiration."



**KING EDWARD VI
SHELDON HEATH
ACADEMY**
Educational excellence for our City

"Having the reassurance that we can commit to projects over a longer term will be hugely beneficial to us and our pupils, making the interventions we can offer more extensive and meaningful."



**Small Heath
Leadership Academy**

"This partnership is making a real difference to our pupils' lives - raising aspirations, improving outcomes, and helping us achieve our vision of nurturing today's young people and inspiring tomorrow's leaders."



**SOUTH & CITY COLLEGE
BIRMINGHAM**

"The impact of this funding has already been felt. Parents have expressed their relief and gratitude upon learning that their children would receive extra support, as they could not afford private tuition."



St Thomas Aquinas
Catholic School & Sixth Form

"We are deeply appreciative of being selected for the Inspiring Futures Programme, offering our students opportunities to grow and succeed."



BUILD Essential skills



THE RIGBY FOUNDATION

inspiring futures



BOOST
Employability

Ahead
PARTNERSHIP

GOAL:

Empower students to succeed in education and beyond

VISION:

Young people from less advantaged backgrounds succeed academically and secure meaningful employment

ENHANCE

Well-being



Place
2Be

Partnering with schools, colleges, evidence-based charities and with WMCA and BCC

GUIDE

Post-school destinations

IntoUniversity



ZERO GRAVITY

ACHIEVE

Maths & English GCSE



GET FURTHER

ACTION
TUTORING



Skills Builder
PARTNERSHIP



THE RIGBY FOUNDATION

HEADLINE FIGURES:

49%

12%

If school absence remains above pre-pandemic levels, the number of NEETS in the West Midlands is predicted to increase by 12% every year

16%

16% youth unemployment in Birmingham in 2025

This equates to 14,315 young people aged from 18-24

49% of pupils in Inspiring Futures schools are eligible for FSM/PP

Rigby Foundation £3m commitment to Inspiring Futures over 3 years

£100k

£100k per Education Partner per year for 3 years

OUR EDUCATION PARTNERS:



Ark Boulton Academy



Ark St Alban's Academy



GRACE ACADEMY SOLIHULL



John Henry Newman Catholic College



KING EDWARD VI SHELDON HEATH ACADEMY



Small Heath Leadership Academy



SOUTH & CITY COLLEGE BIRMINGHAM



St Thomas Aquinas Catholic School & Sixth Form

STRATEGIC PARTNERS



In July 2024 the Foundation launched a three-year partnership with Generation UK to provide opportunities for young adults not in education or training. Generation offers free skills bootcamps to prepare, place and support young people into careers that would otherwise not be accessible for them, including IT. Generation’s provision is rated as outstanding by Ofsted and 70% of learners are placed in jobs within six months of completing the programme. In addition to financial support, the Foundation has helped to connect Generation with employees from SCC, a major division of Rigby Group plc. Staff from SCC take part in employability events, sharing their career journey, skills and experience with Generation learners and helping them to develop their CVs and to prepare for interviews.

“The three-year partnership between The Rigby Foundation and Generation, which launched in 2024, is already making a real difference. Your support is changing lives and we are hugely grateful to be part of the collective effort.”

Michael Houlihan, CEO of Generation UK

£600K	100	34
FUNDING OVER THREE YEARS	FUNDED PLACES PER YEAR	YOUNG ADULTS HAVE ALREADY FOUND WORK



Right to Succeed is a place-based change charity, with an approach that recognises that different places have unique challenges and opportunities and seeks to address them in a holistic and collaborative way. Through a combination of targeted interventions, community engagement, and capacity building, they work to create a supportive environment where every child and young person has the opportunity to fulfill their potential. This is achieved through collaboration with a diverse network of partners, including local authorities, schools, youth organisations and businesses who pool their expertise, resources and networks to drive meaningful change and provide young people with the support and opportunities they need to flourish.

The Rigby Foundation, and Steve Rigby in particular, are proud to have been instrumental in bringing Right to Succeed’s Cradle to Career programme to the West Midlands, with projects in Bordesley Green (Birmingham) and Blakenhall (Walsall) launching in September 2025 and four more wards expected to follow shortly afterwards.

The Rigby Foundation’s anchor donation of **£100,000 a year for 4 years** has enabled Right to Succeed to secure over £6 million from other funders and established a strategic partnership with West Midlands Combined Authority.



The Grace Foundation works with schools to support the aspirational, relational, and spiritual needs of students and their families. Their approach to education focuses on developing the whole person, enhancing student wellbeing, and improving OFSTED outcomes to help transform school communities.

The Rigby Foundation is donating £100k a year for three years to fund a Grace Foundation Ethos Team to support students at a school in South Birmingham from September 2025.



Royal National Children's SpringBoard Foundation (RNCSF) works with the UK's state boarding and independent schools to widen access to fully-funded bursary places for children and the opportunities these provide. They work with children from under-served communities and those with experience of the care system.

The Rigby Foundation's £100,000 funding will enable six looked after young people from the West Midlands to take up bursary places in September 2025.



The SCC Academy, a learning centre dedicated to providing essential technology skills to local unemployed people, was established by Sir Peter Rigby in 2021 to provide local learners with the opportunity to acquire a range of skills through a collection of free, in-person, interactive courses.

The Rigby Foundation provided £100,000 funding for SCC Academy in 2024/25.



OTHER GRANTS

The Foundation also makes a limited number of grants each year to charities chosen by Trustees. In 2024/25 the following organisations were supported:



THE RIGBY FOUNDATION TRUSTEES



SIR PETER RIGBY

"Our family values, culture and ethos has been at the heart of the Rigby Group's success, and I have always believed that success in business goes hand-in-hand with giving back to society."

"That is why I established the Rigby Foundation in 1992 with Patricia, and for over 30 years our Foundation has proudly supported many hundreds of local and national charities to provide invaluable support to people in need, from hospitals and hospices to arts and education organisations. I am delighted that our funding will now be focussed on education and employability projects that enable the young people of Birmingham to have the very best chance of achieving their potential."



STEVE RIGBY, CHAIRMAN

"We've got to leave behind a better environment than we found. That's the message that my brother James and I are taking forward. That's the message we are passing on to our children."

"Through the launch of our groundbreaking social mobility project, Inspiring Futures, we are already working with a number of charity and education partners, and we have other initiatives in the pipeline. We would like to be an exemplar, highlighting how place-based giving and a collaborative approach can make a lasting and powerful difference. And we are committed to long-term investment, which we hope will have a significant and measurably positive impact on many of our local young people."



JAMES RIGBY

"The Rigby Foundation has supported numerous projects over recent decades, always helping those in less fortunate circumstances. Involving colleagues in our charitable activities remains important to the family and I am delighted that there are now many more opportunities for our highly skilled staff to use their expertise and knowledge to help others."

"A great example of this is our partnership with Generation UK, where SCC colleagues are helping local unemployed people to secure meaningful work. I am looking forward to seeing more projects like this, combining donations from the Foundation with practical advice from our teams, hopefully leading to the best possible outcomes for those we support."



PATRICIA RIGBY

"Our family has always sought to give back to our society and the wider community. Everything we've achieved is the result of an incredible amount of hard work, bold leadership, entrepreneurialism, and risk taking and of course a sprinkling of magic and good luck!"

"An upside of our success is that it has enabled us to support a large and diverse number of charitable projects over the past five decades. Our mantra has always been to give back to our chosen causes and projects wholeheartedly, with our full personal and professional support. My hope is that future generations of the Rigby family will continue to build on our philanthropic legacy and support many more good causes."

THE RIGBY FOUNDATION STAFF



SONIA CHHATWAL
EXECUTIVE DIRECTOR

Sonia began her work with The Rigby Foundation in September 2023, bringing with her more than 25 years' experience working with renowned corporate foundations, leading charities and blue chip companies.

Working with the Board of Trustees, Sonia is responsible for setting and implementing strategy, building successful partnerships with a range of stakeholders and ensuring the charity achieves its mission.



JEMIMA WALTHO
PARTNERSHIPS MANAGER

Jemima has over 24 years of experience in developing, delivering, funding and evaluating programmes that support less advantaged young people to gain new skills, broaden their horizons and develop career pathways.

Jemima works with Foundation charity and education partners to ensure our work supports as many of our beneficiaries as possible and is responsible for impact measurement and employee volunteering.



SUE BENSON
ADMINISTRATOR

Sue's career has involved working with both education and non-profit sector organisations including the Association of Charitable Foundations and a large multi-academy trust where she was Head of Data and Compliance.

Sue supports the Foundation Team on finance, administration, governance and compliance, the employee matched funding programme and the development of the Foundation's website.

FINANCIAL OVERVIEW TO 5TH APRIL 2025

£1.055M

DONATIONS RECEIVED FROM
RIGBY GROUP PLC

£844K

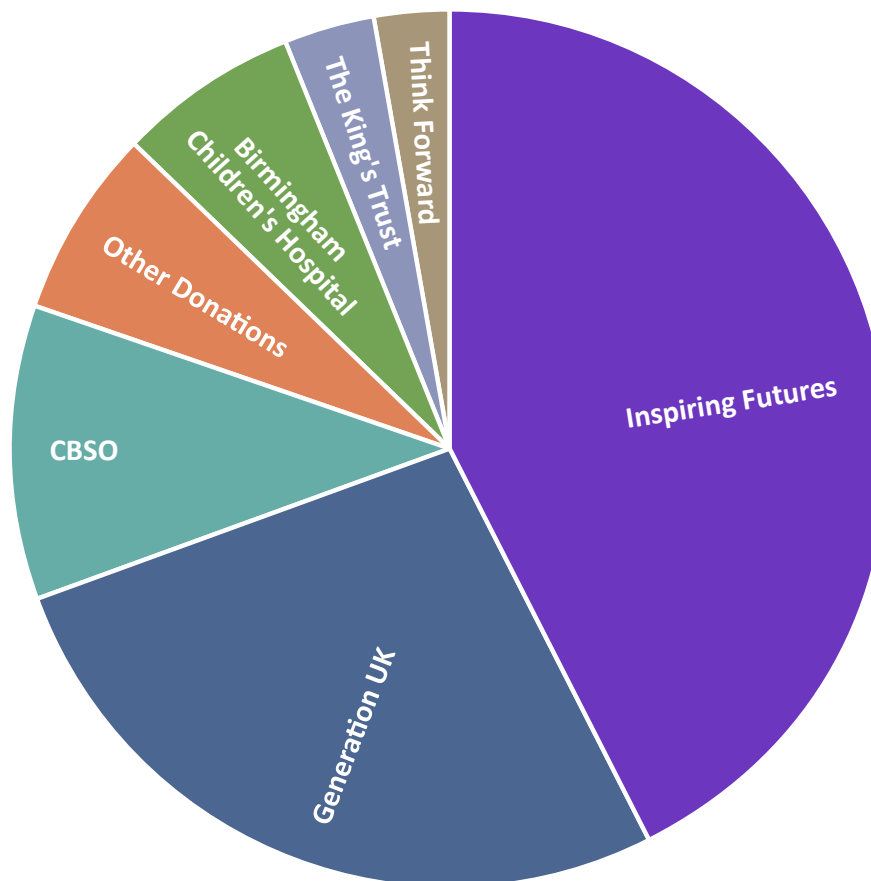
TOTAL DONATIONS MADE TO
SCHOOLS AND CHARITIES

£66K

FUNDING FOR RESEARCH
PROJECTS

32

ORGANISATIONS SUPPORTED



DONATIONS

"It's been an honour over the years to see the success of the Rigby Group reflected in the philanthropic efforts of The Rigby Foundation. Rigby Group has never been run solely for profit and giving back has always been a core value shared by all of my family."

James Rigby, Trustee

LOOKING AHEAD

As we look toward the year ahead, The Rigby Foundation stands at the threshold of amazing opportunity to transform many young lives in communities across the West Midlands. Our vision is rooted in the belief that strategic partnerships with highly skilled and committed partners matched with sustained investment can create lasting change for young people experiencing the most challenging circumstances.

Our partnership with Right to Succeed is a great example of our transformative approach. This place-based change charity recognises that different places have unique challenges and opportunities and seeks to address them in a holistic and collaborative way. Through our Foundation's support in two of the most challenging wards in the country, we will be much more than just charitable donors, we will be hands on partners working collaboratively to achieve systemic change. Our efforts have already successfully enabled £6.3 million in funding from a range

of sources and we are grateful for the strategic partnership with the West Midlands Combined Authority. This approach demonstrates the power of coordinated philanthropy to drive meaningful change and deliver life changing opportunities for young people.

Our philanthropic approach extends beyond traditional charity partnerships. We are leveraging our convening power and fundraising capabilities to amplify impact. My family's funding commitment in the region is substantial and I believe we are establishing ourselves as a national exemplar for place-based giving. September 2025 marks a pivotal moment for our Foundation as we begin the delivery phase of our Inspiring Futures program, with our bold aspiration to directly impact at least 1,000 young people each year.

The Foundation's endeavours continue to be bolstered by the efforts of our many employee volunteers in Rigby

Group's SCC business in Birmingham. The ongoing programme of activities to help local young people includes mentoring, career talks, employability skills workshops and the provision of meaningful work experience, all of which we hope will help bridge the gap between education and the work place.

Innovation is driving The Foundation's future initiatives. WM100, an ambitious programme to secure the next 100 excellent Head Teachers across the West Midlands, will strengthen educational leadership throughout the region and improve standards in school for our students. The 'Women's Work Labs' programme, expected to launch in Birmingham in early 2026, will provide crucial support to local single mothers seeking to return to the workforce, supporting both individual aspirations and broader economic needs.

Our Foundation-commissioned research into pupil absenteeism '*Absent Ambition*' led by the Centre

for Social Justice, launches in September 2025. We hope that the recommendations for education leaders, families, businesses and central government will result in more absent students going back to the classroom where they are safe and have the opportunity to learn and prepare for life after school.

The year ahead holds immense promise for every young person who stands to benefit from our Foundation's annual £2 million investment with leading charities - all of whom are expert in providing the support individuals need to succeed in education and beyond. Through strategic partnerships and innovative programmes, and with sustained commitment from my family, our Foundation team and Rigby Group employees, we envision a future where every young person in our region has the opportunity to thrive and contribute positively to their communities.

Steve Rigby, Chairman

WHAT OUR PARTNERS SAY ABOUT US

"Your generosity is opening the door for us to make a real difference to the lives of students, helping them to build character, develop healthy relationships, and unlock their full potential. We can't wait to get started and see the positive impact that will grow from your investment."



"Thanks to the Rigby Foundation's bold, collaborative approach, real and lasting progress is being made. The impact will be felt for years to come, helping Birmingham become a city where young people can not only live, but thrive."



"We are delighted to be part of the 'Inspiring Futures' programme and look forward to working together over the coming years to provide essential academic, pastoral and skills-development support to thousands of young people in Birmingham."



"Together we will support young people to develop the technical and digital skills needed to unlock their potential, while helping to close essential skills gaps that allow the West Midlands to seize the opportunities presented by the digital revolution."



"Your generous support has allowed us to unlock the potential of many more ambitious students from low-opportunity backgrounds across Birmingham. We look forward to working in partnership with The Rigby Foundation to ensure talent matches opportunity across Birmingham."



"Your support is laying the foundation for brighter futures. We are deeply grateful for your partnership and dedication to making a lasting difference."



"Through the generosity of The Rigby Foundation, we will be able to provide opportunities for more children in care to attend a boarding or independent day school, where they can thrive, build trusting relationships, and secure ambitious, socially mobile futures."



"Your support is helping students from disadvantaged backgrounds at South and City College Birmingham to achieve their English and Maths GCSEs. These qualifications unlock life-changing opportunities in future education and employment, enabling them to thrive in their careers and lives."



"We are so thrilled to have partnered with The Rigby Foundation. Together we will work with students across the West Midlands, helping them find their voice, build resilience, and unlock their full potential."





RIGBY

FOUNDATION

CHARITY REGISTRATION NO. 1207788

Over 30 years of giving back

Registered office: Bridgeway House, Bridgeway, Stratford upon Avon CV37 6YX

info@rigbyfoundation.org.uk

www.rigbyfoundation.org.uk